

CERTIFICATE OF ANALYSIS

ISO/IEC 17025:2017 ACCREDITATION #103104



Order #: 85923
Order Name: Social CBD
Isolate Drops Lemon Ginger
1000mg
Batch#: LE210044
Received: 10/23/2021
Completed: 10/26/2021

Kadenwood Brands
<https://selectmylevel.com>
info@selectmylevel.com



Sample



Cannabinoid Summary

N/D D9-THC	3.998% Total CBD
1,143.8 mg Cannabinoids per unit	1,129.9 mg CBD per unit

1 unit = 30 ml per unit x density
(0.942) x Cannabinoid
concentration

Batch Info

ID:
Date:
Exp. Date:
Size:
Total Qty Produced:

Report Download Info

URL: <https://www.verifycbd.com/report/765dz14fa3>

Testing Summary

Tested Cannabinoids	Pass Pesticide	Tested Terpenes
Tested Microbial	Pass Residual Solvents	Pass Mycotoxin
Pass Heavy Metals	Tested Water Activity	Pass Filtration and Foreign

D9-THC
THCA
CBD 3.998%
CBDA
CBDV
CBC
CBN 0.049%
CBG
CBGA
D8-THC
THCV

Instruments

GCMS-MS - Shimadzu GCMS-TQ8040
LCMS-MS - Shimadzu LCMS-8060
Headspace GCMS - Shimadzu GCMS
QP2020 with HS20
SHIMADZU INTEGRATED UPLC-PDA
ICP-MS - Shimadzu ICPMS-2030
LC-MS - Shimadzu LCMS-8060
PCR - Agilent AriaMX
HD-3A Water Activity Meter
Amscope Simul-Focal Trinocular Stereo
Zoom Microscope

SOPS

Cannabinoids Test - GSL SOP 400
Terpenes Test - GSL SOP 404
Pesticide Analysis - GSL SOP 401
Residual Solvents - GSL SOP 405
Heavy Metals Analysis - GSL SOP 403
Mycotoxin Analysis - GSL SOP 401
Microbial Analysis - GSL SOP 406
Water Activity - GSL SOP 407
Filtration and Foreign Materials Analysis -
GSL SOP 409

Ben Witten, MS, MT., Lab Director

Green Scientific Labs
info@greenscientificlabs.com
1-833 TEST CBD



Green Scientific Labs uses its best efforts to deliver high quality results and to verify that the data contained therein are based on sound scientific judgment and levels listed are guidelines only and all data was reported based on standard laboratory procedures and deviations. However Green Scientific Labs makes no warranties or claims to that effect and further shall not be liable for any damage or misrepresentation that may result from the use or misuse of the data contained herein in any way. Further, Green Scientific Labs makes no claims regarding representations of the analyzed sample to the larger batch from which it was taken. Data and information in this report are intended solely for the individual(s) for whom samples were submitted and as part of our strict confidentiality policy, Green Scientific Labs can only discuss results with the original client of record.

CERTIFICATE OF ANALYSIS

ISO/IEC 17025:2017 ACCREDITATION #103104



Order #: 85923
 Order Name: Social CBD
 Isolate Drops Lemon Ginger
 1000mg
 Batch#: LE210044
 Received: 10/23/2021
 Completed: 10/26/2021

Kadenwood Brands
<https://selectmylevel.com>
info@selectmylevel.com



Sample



N/D
D9-THC

3.998%
Total CBD

1,143.8 mg
Cannabinoids per
unit

1,129.9 mg
CBD per
unit

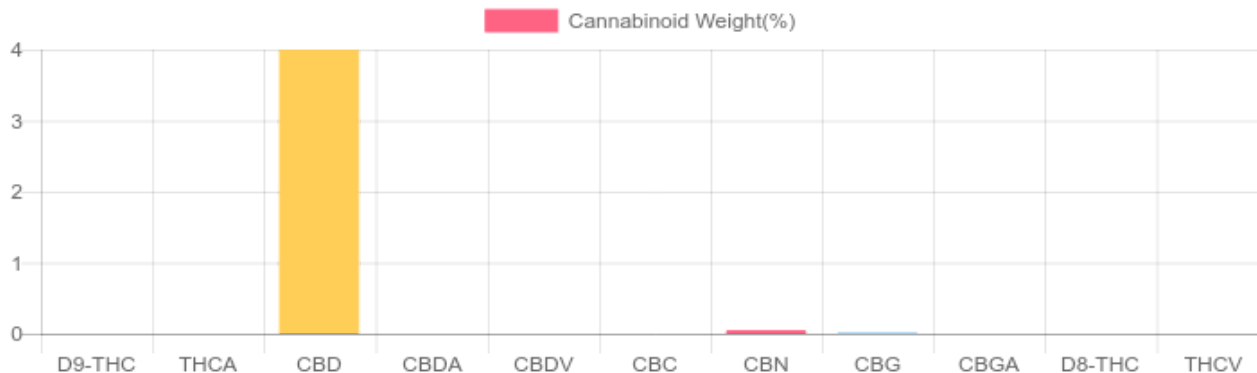
1 unit = 30 ml per unit x density (0.942) x
Cannabinoid concentration

Cannabinoids Test

HPLC-DAD
 GSL SOP 400

UPLOADED: 10/25/2021 07:55:39

Cannabinoids	LOQ(mg/g)	weight(%)	mg/g	mg/unit
D9-THC	0.1954	N/D	N/D	N/D
THCA	0.1954	N/D	N/D	N/D
CBD	0.1954	3.998%	39.984	1,129.948
CBDA	0.1954	N/D	N/D	N/D
CBDV	0.1954	N/D	N/D	N/D
CBC	0.1954	N/D	N/D	N/D
CBN	0.1954	0.049%	0.491	13.876
CBG	0.1954	B/LOQ	B/LOQ	B/LOQ
CBGA	0.1954	N/D	N/D	N/D
D8-THC	0.1954	N/D	N/D	N/D
THCV	0.1954	N/D	N/D	N/D
TOTAL D9-THC		N/D	N/D	N/D
TOTAL CBD*		3.998%	39.984	1,129.9
TOTAL CANNABINOIDS		4.047%	40.475	1,143.8



*Total CBD = CBD + CBDA x 0.877
 N/D - Not Detected, B/LOQ - Below Limit of Quantification

Ben Witten, MS, MT., Lab Director

Green Scientific Labs
info@greenscientificlabs.com
 1-833 TEST CBD



Green Scientific Labs uses its best efforts to deliver high quality results and to verify that the data contained therein are based on sound scientific judgment and levels listed are guidelines only and all data was reported based on standard laboratory procedures and deviations. However Green Scientific Labs makes no warranties or claims to that effect and further shall not be liable for any damage or misrepresentation that may result from the use or misuse of the data contained herein in any way. Further, Green Scientific Labs makes no claims regarding representations of the analyzed sample to the larger batch from which it was taken. Data and information in this report are intended solely for the individual(s) for whom samples were submitted and as part of our strict confidentiality policy, Green Scientific Labs can only discuss results with the original client of record.

CERTIFICATE OF ANALYSIS

ISO/IEC 17025:2017 ACCREDITATION #103104



Order #: 85923
 Order Name: Social CBD
 Isolate Drops Lemon Ginger
 1000mg
 Batch#: LE210044
 Received: 10/23/2021
 Completed: 10/26/2021

Kadenwood Brands
<https://selectmylevel.com>
info@selectmylevel.com



TERPENES: TOTAL (2.756%)

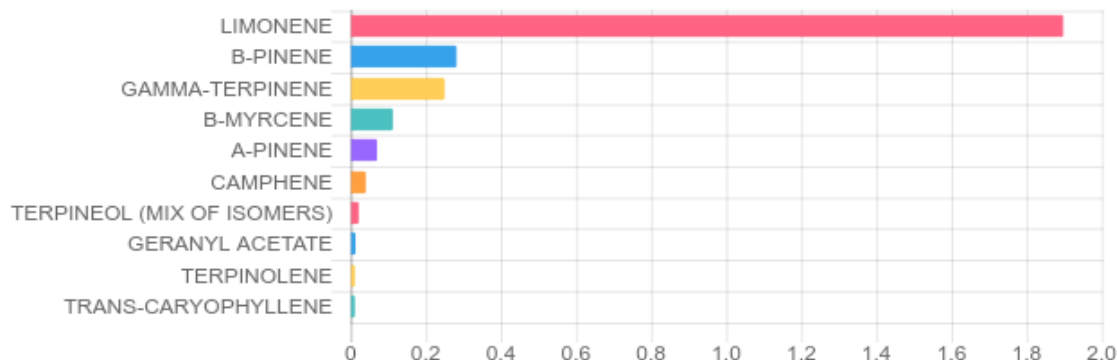
GC-FID

GSL SOP 404

Uploaded: 10/25/2021 16:22:57

Terpene	Results (%)	LOQ (%)	LOD (%)	Terpene	Results (%)	LOQ (%)	LOD (%)
3-CARENE	0.005%	0.003%	0.001%	GERANIOL	N/D	0.003%	0.001%
A-BISABOLOL	N/D	0.003%	0.001%	GERANYL ACETATE	0.013%	0.003%	0.001%
A-CEDRENE	N/D	0.003%	0.001%	GUAJOL	N/D	0.003%	0.001%
A-HUMULENE	N/D	0.003%	0.001%	HEXAHYDROTHYMOL	N/D	0.003%	0.001%
A-PINENE	0.070%	0.003%	0.001%	ISOBORNEOL	N/D	0.003%	0.001%
A-TERPINENE	0.004%	0.003%	0.001%	ISOPULEGOL	N/D	0.003%	0.001%
B-MYRCENE	0.112%	0.003%	0.001%	LIMONENE	1.898%	0.003%	0.001%
B-PINENE	0.282%	0.003%	0.001%	LINALOOL	0.007%	0.003%	0.001%
BORNEOL (MIX OF ISOMERS)	0.005%	0.003%	0.001%	NEROL	0.006%	0.003%	0.001%
CAMPHENE	0.040%	0.003%	0.001%	P-MENTHA-1, 5-DIENE	B/LOQ	0.003%	0.001%
CAMPHOR (MIX OF ISOMERS)	N/D	0.003%	0.001%	PULEGONE (+)	N/D	0.003%	0.001%
CARYOPHYLLENE OXIDE	0.005%	0.003%	0.001%	SABINENE HYDRATE	B/LOQ	0.003%	0.001%
CEDROL	N/D	0.003%	0.001%	TERPINEOL (MIX OF ISOMERS)	0.021%	0.003%	0.001%
CIS-NEROLIDOL	N/D	0.003%	0.001%	TERPINOLENE	0.011%	0.003%	0.001%
CIS-OCIMENE	N/D	0.003%	0.001%	TRANS-CARYOPHYLLENE	0.011%	0.003%	0.001%
ENDO-FENCHYL ALCOHOL	N/D	0.003%	0.001%	TRANS-NEROLIDOL	0.003%	0.003%	0.001%
EUCALYPTOL	0.010%	0.003%	0.001%	TRANS-OCIMENE	N/D	0.003%	0.001%
FENCHONE (MIX OF ISOMERS)	N/D	0.003%	0.001%	VALENCENE	N/D	0.003%	0.001%
GAMMA-TERPINENE	0.250%	0.003%	0.001%				

Top Terpenes Results:



Ben Witten

Ben Witten, MS, MT., Lab Director

Green Scientific Labs
info@greenscientificlabs.com
 1-833 TEST CBD



Green Scientific Labs uses its best efforts to deliver high quality results and to verify that the data contained therein are based on sound scientific judgment and levels listed are guidelines only and all data was reported based on standard laboratory procedures and deviations. However Green Scientific Labs makes no warranties or claims to that effect and further shall not be liable for any damage or misrepresentation that may result from the use or misuse of the data contained herein in any way. Further, Green Scientific Labs makes no claims regarding representations of the analyzed sample to the larger batch from which it was taken. Data and information in this report are intended solely for the individual(s) for whom samples were submitted and as part of our strict confidentiality policy, Green Scientific Labs can only discuss results with the original client of record.

CERTIFICATE OF ANALYSIS

ISO/IEC 17025:2017 ACCREDITATION #103104



Order #: 85923
 Order Name: Social CBD
 Isolate Drops Lemon Ginger
 1000mg
 Batch#: LE210044
 Received: 10/23/2021
 Completed: 10/26/2021

Kadenwood Brands
<https://selectmylevel.com>
info@selectmylevel.com



PESTICIDE ANALYSIS:

GSL SOP 401

PREPARED: 10/23/2021 17:38:03

UPLOADED: 10/25/2021 14:51:05

GC-MS/MS

Pesticide	Action Level (ppm)	Results (ppm)	LOQ (ppm)	LOD (ppm)
CAPTAN	0.700	N/D	0.100	0.010
CHLORDANE	0.100	N/D	0.100	0.010
CHLORFENAPYR	0.100	N/D	0.100	0.010
COUMAPHOS	0.100	N/D	0.100	0.010

Pesticide	Action Level (ppm)	Results (ppm)	LOQ (ppm)	LOD (ppm)
CYFLUTHRIN	2.000	N/D	0.100	0.010
CYPERMETHRIN	1.000	N/D	0.100	0.010
PARATHION-METHYL	0.100	N/D	0.100	0.010
PENTACHLORONITROBENZENE	0.100	N/D	0.100	0.010

LC-MS/MS

Pesticide	Action Level (ppm)	Results (ppm)	LOQ (ppm)	LOD (ppm)
ABAMECTIN B1A	0.100	N/D	0.005	0.005
ACEPHATE	0.100	N/D	0.005	0.001
ACEQUINOCYL	0.100	N/D	0.005	0.005
ACETAMIPRID	0.100	N/D	0.005	0.005
ALDICARB	0.100	N/D	0.005	0.005
AZOXYSTROBIN	0.100	N/D	0.005	0.001
BIFENAZATE	0.100	N/D	0.005	0.001
BIFENTHRIN	3.000	N/D	0.005	0.005
BOSCALID	0.100	N/D	0.005	0.005
CARBARYL	0.500	N/D	0.005	0.001
CARBOFURAN	0.100	N/D	0.005	0.001
CHLORANTRANILIPROLE	10.000	N/D	0.005	0.005
CHLORPYRIFOS	0.100	N/D	0.005	0.005
CLOFENTEZINE	0.100	N/D	0.005	0.005
DAMINOZIDE	0.100	N/D	0.005	0.001
DIAZINON	0.100	N/D	0.005	0.005
DICHLORVOS	0.100	N/D	0.005	0.001
DIMETHOATE	0.100	N/D	0.005	0.001
DIMETHOMORPH	2.000	N/D	0.005	0.001
ETHOPROPHOS	0.100	N/D	0.005	0.001
ETOFENPROX	0.100	N/D	0.005	0.005
ETOXAZOLE	0.100	N/D	0.050	0.005
FENHEXAMID	0.100	N/D	0.005	0.001
FENOXYCARB	0.100	N/D	0.005	0.005
FENPYROXIMATE	0.100	N/D	0.005	0.005
FIPRONIL	0.100	N/D	0.005	0.005
FLONICAMID	0.100	N/D	0.025	0.005
FLUDIOXONIL	0.100	N/D	0.005	0.005
HEXYTHIAZOX	0.100	N/D	0.005	0.005
IMAZALIL	0.100	N/D	0.005	0.001

Pesticide	Action Level (ppm)	Results (ppm)	LOQ (ppm)	LOD (ppm)
IMIDACLOPRID	5.000	N/D	0.005	0.001
KRESOXIM-METHYL	0.100	N/D	0.005	0.005
MALATHION	0.500	N/D	0.005	0.001
METALAXYL	2.000	N/D	0.005	0.001
METHIOCARB	0.100	N/D	0.005	0.001
METHOMYL	1.000	N/D	0.005	0.001
MEVINPHOS	0.100	N/D	0.005	0.001
MYCLOBUTANIL	0.100	N/D	0.005	0.005
NALED	0.100	N/D	0.005	0.001
OXAMYL	0.500	N/D	0.005	0.001
PACLOBUTRAZOL	0.100	N/D	0.005	0.005
PERMETHRINS	0.500	N/D	0.005	0.005
PHOSMET	0.100	N/D	0.005	0.001
PIPERONYL	3.000	N/D	0.005	0.005
BUTOXIDE		N/D	0.005	0.005
PRALLETHRIN	0.100	N/D	0.005	0.005
PROPICONAZOLE	0.100	N/D	0.010	0.005
PROPOXUR	0.100	N/D	0.005	0.001
PYRETHRINS	0.500	N/D	0.005	0.001
PYRIDABEN	0.100	N/D	0.005	0.005
SPINETORAM	0.100	N/D	0.005	0.005
SPINOSAD	0.100	N/D	0.005	0.005
SPIROMESIFEN	0.100	N/D	0.005	0.001
SPIROTETRAMAT	0.100	N/D	0.005	0.005
SPIROXAMINE	0.100	N/D	0.005	0.001
TEBUCONAZOLE	0.100	N/D	0.005	0.001
THIACLOPRID	0.100	N/D	0.005	0.001
THIAMETHOXAM	5.000	N/D	0.005	0.001
TRIFLOXYSTROBIN	0.100	N/D	0.005	0.005

N/D = Not Detected, A/LOQ = Above LOQ Level, B/LOQ = Below LOQ Level, B/LOD = Below LOD Level

Ben Witten, MS, MT., Lab Director

Green Scientific Labs
info@greenscientificlabs.com
 1-833 TEST CBD



Green Scientific Labs uses its best efforts to deliver high quality results and to verify that the data contained therein are based on sound scientific judgment and levels listed are guidelines only and all data was reported based on standard laboratory procedures and deviations. However Green Scientific Labs makes no warranties or claims to that effect and further shall not be liable for any damage or misrepresentation that may result from the use or misuse of the data contained herein in any way. Further, Green Scientific Labs makes no claims regarding representations of the analyzed sample to the larger batch from which it was taken. Data and information in this report are intended solely for the individual(s) for whom samples were submitted and as part of our strict confidentiality policy, Green Scientific Labs can only discuss results with the original client of record.

CERTIFICATE OF ANALYSIS

ISO/IEC 17025:2017 ACCREDITATION #103104



Order #: 85923
Order Name: Social CBD
Isolate Drops Lemon Ginger
1000mg
Batch#: LE210044
Received: 10/23/2021
Completed: 10/26/2021

Kadenwood Brands
<https://selectmylevel.com>
info@selectmylevel.com



RESIDUAL SOLVENTS:

HS-GC-MS

GSL SOP 405

Uploaded: 10/25/2021 14:21:49

Residual Solvent	Action Level (ppm)	Results (ppm)	LOQ (ppm)	LOD (ppm)
1,1-DICHLOROETHENE	8	N/D	0.63	0.6
1,2-DICHLOROETHANE	2	N/D	0.12	0.012
1,2-DICHLOROETHENE	5	N/D	0.73	0.09
ACETONE	5,000	N/D	140	9
ACETONITRILE	410	N/D	25	0.72
BENZENE	1	N/D	1	0.6
BUTANE	5,000	N/D	50	48
CHLOROFORM	1	N/D	1	0.5
ETHANOL	5,000	N/D	140	12
ETHYL ACETATE	5,000	N/D	140	2.4
ETHYL ETHER	5,000	N/D	140	6
ETHYLENE OXIDE	1	N/D	2	0.6
ISOPROPYL ALCOHOL	5,000	N/D	140	3
METHANOL	3,000	N/D	100	6
METHYLENE CHLORIDE	125	N/D	1.5	1.5
N-HEPTANE	5,000	N/D	140	6
N-HEXANE	290	N/D	18	0.06
PENTANE	5,000	N/D	140	9
PROPANE	5,000	N/D	30	30
TOLUENE	890	N/D	53	0.9
TRICHLOROETHENE	1	N/D	1	0.3
XYLENES	150	N/D	130	1.8

Ben Witten, MS, MT., Lab Director

Green Scientific Labs
info@greenscientificlabs.com
1-833 TEST CBD



Green Scientific Labs uses its best efforts to deliver high quality results and to verify that the data contained therein are based on sound scientific judgment and levels listed are guidelines only and all data was reported based on standard laboratory procedures and deviations. However Green Scientific Labs makes no warranties or claims to that effect and further shall not be liable for any damage or misrepresentation that may result from the use or misuse of the data contained herein in any way. Further, Green Scientific Labs makes no claims regarding representations of the analyzed sample to the larger batch from which it was taken. Data and information in this report are intended solely for the individual(s) for whom samples were submitted and as part of our strict confidentiality policy, Green Scientific Labs can only discuss results with the original client of record.

CERTIFICATE OF ANALYSIS

ISO/IEC 17025:2017 ACCREDITATION #103104



Order #: 85923
 Order Name: Social CBD
 Isolate Drops Lemon Ginger
 1000mg
 Batch#: LE210044
 Received: 10/23/2021
 Completed: 10/26/2021

Kadenwood Brands
<https://selectmylevel.com>
info@selectmylevel.com



Microbial Analysis:

Microbial Analysis GSL SOP 406

Uploaded: 10/25/2021 20:14:50

MICROBIAL ANALYSIS:

Test	SOP	Test Method	Device Used	LOD	Actual Result
TOTAL YEAST AND MOLD	406.01	USP 61/62†	ARIAMX PCR	1,000 CFU/G	< 1,000 CFU/G
AEROBIC BACTERIA COUNT	406.01	USP 61/62†	ARIAMX PCR	10,000 CFU/G	< 10,000 CFU/G
ASPERGILLUS FUMIGATUS***	406.01	USP 61/62†	ARIAMX PCR	1 CFU/G**	NOT DETECTED
ASPERGILLUS TERREUS***	406.01	USP 61/62†	ARIAMX PCR	1 CFU/G**	NOT DETECTED
ASPERGILLUS FLAVUS***	406.01	USP 61/62†	ARIAMX PCR	1 CFU/G**	NOT DETECTED
ASPERGILLUS NIGER***	406.01	USP 61/62†	ARIAMX PCR	1 CFU/G**	NOT DETECTED
STEC E. COLI*	406.01	USP 61/62†	ARIAMX PCR	1 CFU/G**	NOT DETECTED
SALMONELLA*	406.01	USP 61/62†	ARIAMX PCR	1 CFU/G**	NOT DETECTED
ENTEROBACTERIACEAE	406.01	USP 61/62†	ARIAMX PCR	100 CFU/G	< 100 CFU/G
COLIFORM	406.01	USP 61/62†	ARIAMX PCR	100 CFU/G	< 100 CFU/G

† USP 61 (enumeration of bacteria TAC, TYM, and ENT/Coliform), USP 62 (identifying specific species E.coli Aspergillus etc)

* STEC and Salmonella run as Multiplex

** CFU/g Calculation based on MIP/Extract matrix

*** Flavus = 2 Copies of DNA / Fumigatis = 2 Copies of DNA Niger = 20 Copies of DNA / Terrus = 10 copies of DNA

Ben Witten, MS, MT., Lab Director

Green Scientific Labs
info@greenscientificlabs.com
 1-833 TEST CBD



Green Scientific Labs uses its best efforts to deliver high quality results and to verify that the data contained therein are based on sound scientific judgment and levels listed are guidelines only and all data was reported based on standard laboratory procedures and deviations. However Green Scientific Labs makes no warranties or claims to that effect and further shall not be liable for any damage or misrepresentation that may result from the use or misuse of the data contained herein in any way. Further, Green Scientific Labs makes no claims regarding representations of the analyzed sample to the larger batch from which it was taken. Data and information in this report are intended solely for the individual(s) for whom samples were submitted and as part of our strict confidentiality policy, Green Scientific Labs can only discuss results with the original client of record.

CERTIFICATE OF ANALYSIS

ISO/IEC 17025:2017 ACCREDITATION #103104



Order #: 85923
Order Name: Social CBD
Isolate Drops Lemon Ginger
1000mg
Batch#: LE210044
Received: 10/23/2021
Completed: 10/26/2021

Kadenwood Brands
<https://selectmylevel.com>
info@selectmylevel.com



Mycotoxin Analysis:

LC-MS/MS
GSL SOP 401

Uploaded: 10/25/2021 14:51:05

Analyte	Action Lvl (ppb)	Results (ppb)
AFLATOXIN B1	20	N/D
AFLATOXIN B2	20	N/D
AFLATOXIN G1	20	N/D
AFLATOXIN G2	20	N/D
OCHRATOXIN A	20	N/D

LOQ is 1ppb, LOD is 1ppb

Moisture Analysis:

Shimadzu MOC63U Moisture Balance - GSL SOP 411

Uploaded: 10/23/2021 18:23:16

Moisture %

5.3%

Heavy Metals Analysis:

ICP-MS
GSL SOP 403

Uploaded: 10/25/2021 15:18:23

Metal	Action Level (ppb)	Result (ppb)
ARSENIC (AS)	200	N/D
CADMIUM (CD)	200	N/D
MERCURY (HG)	100	B/LOQ
LEAD (PB)	500	N/D

Lower Limit of Quantitation (LOQ) is 75 ppb, Limit of Detection (LOD) is 3 ppb

Water Activity:

Water Activity Meter

Uploaded: 10/23/2021 18:23:16

Water

0.48

Filth and Foreign Materials Analysis:

Microscope - Amscope Simul-Focal Trinocular Stereo Zoom Microscope - GSL SOP 409

Uploaded: 10/23/2021 18:35:20

Pass: No Foreign Materials Detected

Ben Witten, MS, MT., Lab Director

Green Scientific Labs
info@greenscientificlabs.com
1-833 TEST CBD



Green Scientific Labs uses its best efforts to deliver high quality results and to verify that the data contained therein are based on sound scientific judgment and levels listed are guidelines only and all data was reported based on standard laboratory procedures and deviations. However Green Scientific Labs makes no warranties or claims to that effect and further shall not be liable for any damage or misrepresentation that may result from the use or misuse of the data contained herein in any way. Further, Green Scientific Labs makes no claims regarding representations of the analyzed sample to the larger batch from which it was taken. Data and information in this report are intended solely for the individual(s) for whom samples were submitted and as part of our strict confidentiality policy, Green Scientific Labs can only discuss results with the original client of record.